

WINNA SERIES

维纳系列

2020 | PRODUCT CATALOGUE

V I N A
S E R I E S

Veina has an innovative thinking and the meaning of a hundred rivers,
the Veina series is specially tailored for middle and senior managers

Veina维纳有创新思维与海纳百川的寓意，
维纳系列专为企业中高层管理者量身定制

GOJO 高卓





VNA MANAGER TABLE

VNA series design reflects the modern, simple and practical, table using arc process and square inclined foot modeling to give users a sense of business ability, diagonal cut feet support the whole table, instantly improve product texture, depicting simple, hard shape style, to create a comfortable, elegant style. The side cabinets can effectively combine the storage and wiring functions of office goods, which is more conducive to keeping the working environment clean and comfortable.

VNA维纳系列设计体现了现代、简约和实用，台面采用弧形的工艺处理与方正的斜脚造型给用户以干练的商务感，斜切脚支撑起了整个台面，瞬间提升产品质感，刻画出简约、硬朗的外形风格，营造出一种舒适、高雅的风格。侧柜有效的结合办公物品收纳与走线功能，也更利于保持工作环境的整洁与舒适。



VNA-DEA-2419 班台
2433(W) × 1900(D) × 750(H)mm
VNA-CAA-2819 文件柜
2800(W) × 450(D) × 1900(H)mm



VNA-DEA-2419 班台
2433(W)×1900(D)×750(H)mm
VNA-CAB-2419 文件柜
2400(W)×450(D)×1900(H)mm



Fashionable appearance design and simple and practical functional configuration emphasize the advantages of auxiliary platform as support. Besides scientific and perfect internal wiring function, various storage functions can effectively make use of cabinet space, solve the needs of humanized storage, and make office storage control freely. Comfortable office environment, adjust the tense working atmosphere, add a comfortable, elegant modern office experience, office space style should not only reflect their taste, but also have modern elements such as fashion, personality, simplicity.

时尚的外观设计、简单实用的功能配置，强调了辅台作为支撑的优势，辅台除了具有科学完善的内部走线功能以外，各种收纳功能能有效利用柜体空间，解决人性化收纳需求，让办公收纳掌控自如。舒适的办公环境，调节紧张的工作气氛，平添一份自在、优雅的现代办公感受，办公空间在风格上不仅要能体现他们的品位，还要具有时尚、个性、简约等现代化元素。

VNA MANAGER CUPBOARD



Filing cabinets concurrently practical with the appearance, concise and fashionable modelling, the collocation of different material, combining the practical and uniqueness, build a full of modern business feeling of office space, filing cabinets receive using both closed and open to receive way, meet individual receive a function, let us experience a new office in this life.

文件柜实用与外形兼具，简洁时尚的造型、不同材质的搭配，兼顾了实用性和独特性，营造了一个充满现代商务感觉的办公空间，文件柜的收纳采用封闭和敞开式两种收纳方式，满足个人收纳功能，让我们在此体验新的办公生活。

VNA-CAA-2819 文件柜
2800(W)×450(D)×1900(H)mm



VNA MEETING SOFA

Simple and fashionable appearance design, let grade bearing is outstanding, soft and delicate texture, concise line and plain and light color, give a person in harmonious experience, added a kind of elegant and easy, comfortable and leisure characteristics.

简约时尚的外型设计、让品位气度不同凡响，柔软细腻的质感，简洁的线条和素淡的色泽，给人在和谐的感受外，增添了一种优雅大方、舒适闲宜的特点。



VNA-CTB-0707 方茶几
700(W)×700(D)×420(H)mm



VNA-CTA-1407 长茶几
1400(W)×700(D)×420(H)mm

VNA MEETING DESK

The conference table uses the whole series of diagonal foot design elements, neat and easy line design, bring visual impact, mesa match colors follow the use of wood grain and metal collocation of modern fashion breath.

会议桌沿用了整个系列的斜脚设计元素, 利落大方的线条设计, 带来视觉冲击力, 台面配色沿用采用木纹与金属的搭配现代时尚气息。



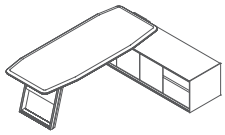
VNA-MTA-2411 会议桌
2400(W)×1100(D)×750(H)mm



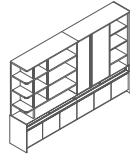
VNA Series | 维纳系列

产品规格 Dimensions

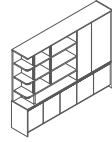
VNA-DEA-2419 班台
2433(W)×1900(D)×750(H)mm



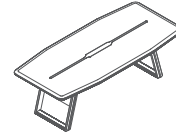
VNA-CAA-2819 文件柜
2800(W)×450(D)×1900(H)mm



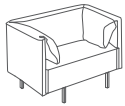
VNA-CAB-2419 文件柜
2400(W)×450(D)×1900(H)mm



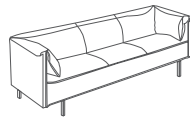
VNA-MTA-2411 会议桌
2400(W)×1100(D)×750(H)mm



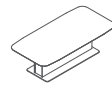
GZJ-6980 单人位沙发
990(W)×780(D)×700(H)mm



GZJ-6980 三人位沙发
2060(W)×780(D)×700(H)mm



VNA-CTA-1407 长茶几
1400(W)×700(D)×420(H)mm



VNA-CTB-0707 方茶几
700(W)×700(D)×420(H)mm



产品配色 Product Color

VNA维纳系列采用直纹胡桃为基色, 选配深灰蓝、星空灰、浅棕灰三种金属漆搭配, 色彩丰富、朝气蓬勃、虚实结合, 时尚与个性完美呈现, 纯商务属性让人印象深刻。

VNA series use Australian natural Eucalyptus logs as the basic color, and dark grey blue metal paint and Star grey metal paint, light brown grey metal paint for decorations, these three rich colors are quite vigorous, fashionable and impressive.



直纹胡桃



星空灰



青蓝色